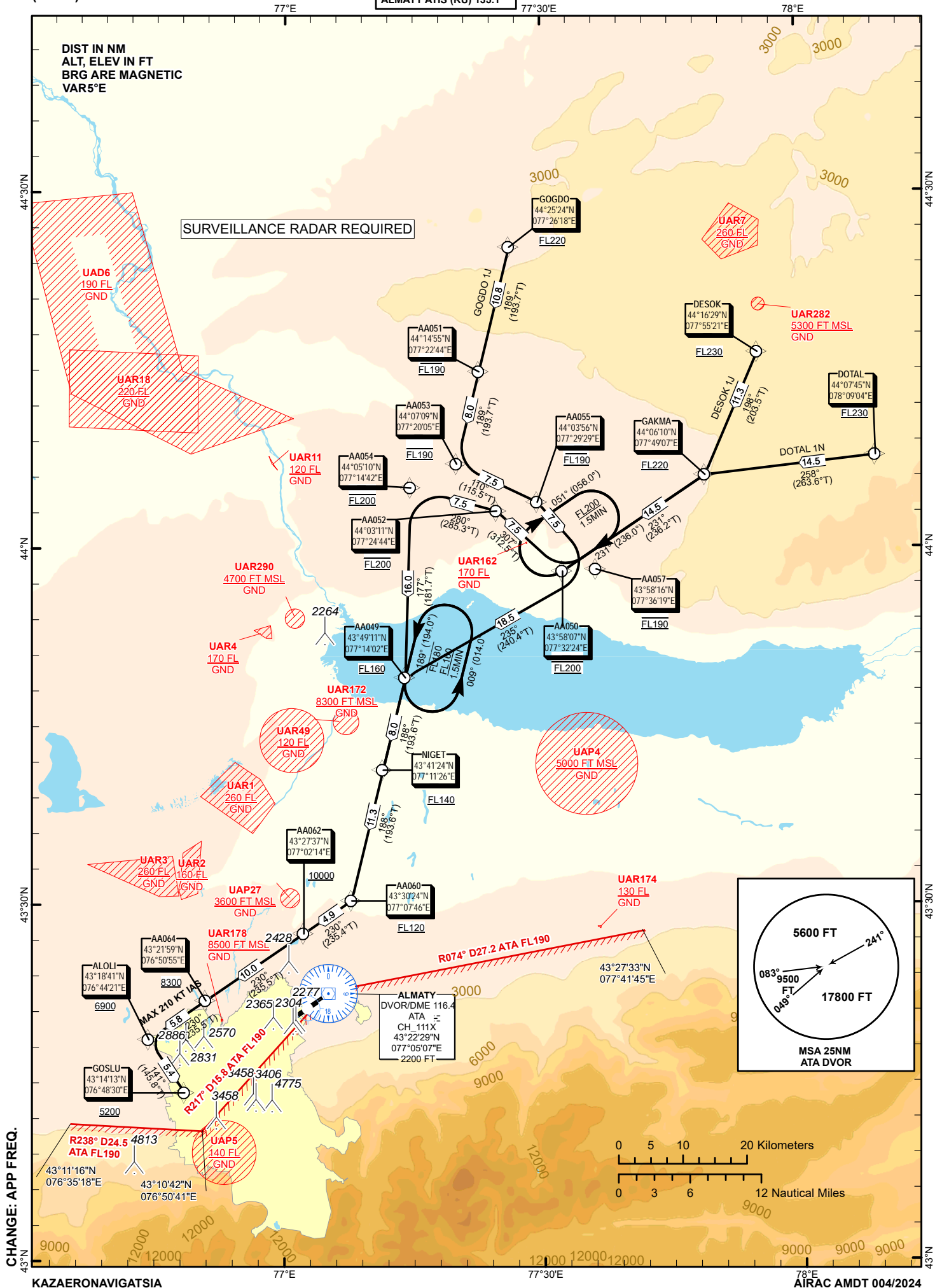


ALMATY
RWY 05L/05R



TABULAR DESCRIPTION

DESOK 1J											
Serial Number	Path Descriptor	Waypoint Identifier	Fly - over	Course °M(°T)	Magnetic Variation(°)	Distance NM	Turn Direction	Altitude FT	Speed KT	VPA (°)	Navigation Specification
10	IF	DESOK	-		5.12	0	-	+FL230	-280	-	RNAV1
20	TF	GAKMA	-	198(203.5)	5.12	11.3	-	+FL220	-280	-	RNAV1
30	TF	AA050	-	231(236.2)	5.12	14.5	R	@FL200	-280	-	RNAV1
40	TF	AA052	-	307(312.5)	5.12	7.5	R	@FL200	-280	-	RNAV1
50	TF	AA054	-	280(285.3)	5.12	7.5	L	@FL200	-280	-	RNAV1
60	TF	AA049	-	177(181.7)	5.12	16	L	+FL160	-280	-	RNAV1
70	TF	NIGET	-	188(193.6)	5.12	8	R	+FL140	-280	-	RNAV1
80	TF	AA060	-	188(193.6)	5.12	11.3	R	+FL120	-250	-	RNAV1
90	TF	AA062	-	230(235.4)	5.12	4.9	R	+10000	-250	-	RNAV1
100	TF	AA064	-	230(235.5)	5.12	10	R	+8300	-210	-	RNAV1
110	TF	ALOLI	-	230(235.5)	5.12	5.8	-	+6900	-210	-	RNAV1
120	TF	GOSLU	-	141(145.8)	5.12	5.4	L	+5200	-210	-	RNAV1

WAYPOINT LIST

DESOK 1J		
Waypoint Identifier	Coordinates	
DESOK	441629.00N	0775521.00E
GAKMA	440610.00N	0774907.00E
AA050	435806.55N	0773223.50E
AA052	440310.99N	0772444.28E
AA054	440510.17N	0771442.40E
AA049	434910.54N	0771402.03E
NIGET	434124.00N	0771126.00E
AA060	433024.02N	0770746.34E
AA062	432737.38N	0770213.73E
AA064	432158.53N	0765054.64E
ALOLI	431840.90N	0764420.60E
GOSLU	431413.06N	0764829.77E

TABULAR DESCRIPTION

DOTAL 1N											
Serial Number	Path Descriptor	Waypoint Identifier	Fly - over	Course °M(°T)	Magnetic Variation(°)	Distance NM	Turn Direction	Altitude FT	Speed KT	VPA (°)	Navigation Specification
10	IF	DOTAL	-		5.12	0	-	+FL230	-280	-	RNAV1
20	TF	GAKMA	-	258(263.6)	5.12	14.5	R	+FL220	-280	-	RNAV1
30	TF	AA050	-	231(236.2)	5.12	14.5	L	@FL200	-280	-	RNAV1
40	TF	AA052	-	307(312.5)	5.12	7.5	R	@FL200	-280	-	RNAV1
50	TF	AA054	-	280(285.3)	5.12	7.5	L	@FL200	-280	-	RNAV1
60	TF	AA049	-	177(181.7)	5.12	16	L	+FL160	-280	-	RNAV1
70	TF	NIGET	-	188(193.6)	5.12	8	R	+FL140	-280	-	RNAV1
80	TF	AA060	-	188(193.6)	5.12	11.3	R	+FL120	-250	-	RNAV1
90	TF	AA062	-	230(235.4)	5.12	4.9	R	+10000	-250	-	RNAV1
100	TF	AA064	-	230(235.5)	5.12	10	R	+8300	-210	-	RNAV1
110	TF	ALOLI	-	230(235.5)	5.12	5.8	-	+6900	-210	-	RNAV1
120	TF	GOSLU	-	141(145.8)	5.12	5.4	L	+5200	-210	-	RNAV1

WAYPOINT LIST

DOTAL 1N		
Waypoint Identifier	Coordinates	
DOTAL	440745.00N	0780904.00E
GAKMA	440610.00N	0774907.00E
AA050	435806.55N	0773223.50E
AA052	440310.99N	0772444.28E
AA054	440510.17N	0771442.40E
AA049	434910.54N	0771402.03E
NIGET	434124.00N	0771126.00E
AA060	433024.02N	0770746.34E
AA062	432737.38N	0770213.73E
AA064	432158.53N	0765054.64E
ALOLI	431840.90N	0764420.60E
GOSLU	431413.06N	0764829.77E

WAYPOINT LIST

GOGDO 1J		
Waypoint Identifier	Coordinates	
GOGDO	442524.00N	0772618.00E
AA051	441455.47N	0772243.64E
AA053	440709.15N	0772005.44E
AA055	440355.69N	0772929.21E
AA057	435816.33N	0773618.80E
AA049	434910.54N	0771402.03E
NIGET	434124.00N	0771126.00E
AA060	433024.02N	0770746.34E
AA062	432737.38N	0770213.73E
AA064	432158.53N	0765054.64E
ALOLI	431840.90N	0764420.60E
GOSLU	431413.06N	0764829.77E

TABULAR DESCRIPTION

GOGDO 1J											
Serial Number	Path Descriptor	Waypoint Identifier	Fly - over	Course °M(°T)	Magnetic Variation(°)	Distance NM	Turn Direction	Altitude FT	Speed KT	VPA (°)	Navigation Specification
10	IF	GOGDO	-		5.12	0	-	+FL220	-280	-	RNAV1
20	TF	AA051	-	189(193.7)	5.12	10.8	R	@FL190	-280	-	RNAV1
30	TF	AA053	-	189(193.7)	5.12	8	R	@FL190	-280	-	RNAV1
40	TF	AA055	-	110(115.5)	5.12	7.5	L	@FL190	-280	-	RNAV1
50	TF	AA057	-	134(139)	5.12	7.5	R	@FL190	-280	-	RNAV1
60	TF	AA049	-	235(240.4)	5.12	18.5	R	+FL160	-280	-	RNAV1
70	TF	NIGET	-	188(193.6)	5.12	8	L	+FL140	-280	-	RNAV1
80	TF	AA060	-	188(193.6)	5.12	11.3	R	+FL120	-250	-	RNAV1
90	TF	AA062	-	230(235.4)	5.12	4.9	R	+10000	-250	-	RNAV1
100	TF	AA064	-	230(235.5)	5.12	10	R	+8300	-210	-	RNAV1
110	TF	ALOLI	-	230(235.5)	5.12	5.8	-	+6900	-210	-	RNAV1
120	TF	GOSLU	-	141(145.8)	5.12	5.4	L	+5200	-210	-	RNAV1